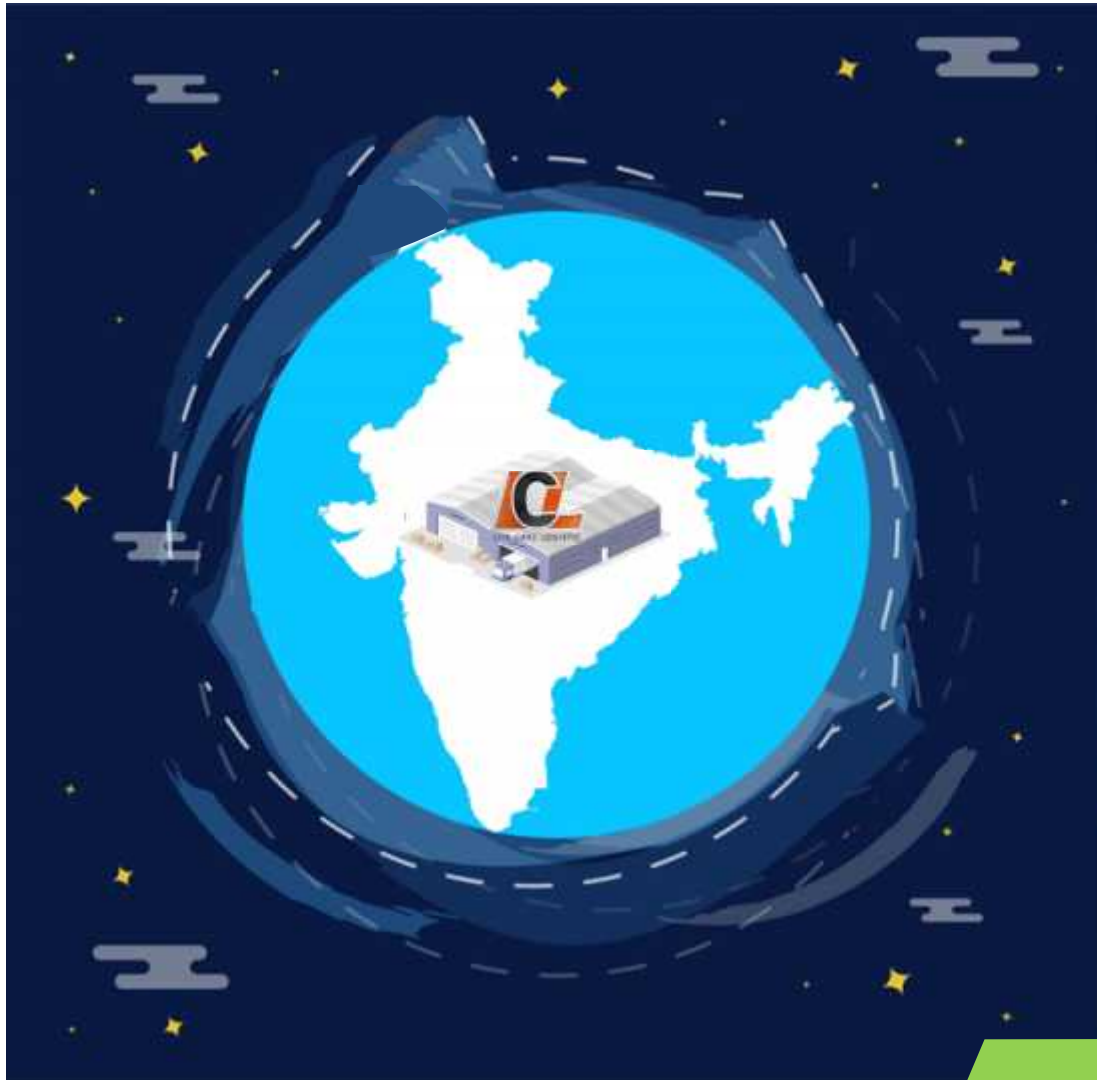




LIFE CARE LOGISTIC PVT LTD



INTRODUCTION

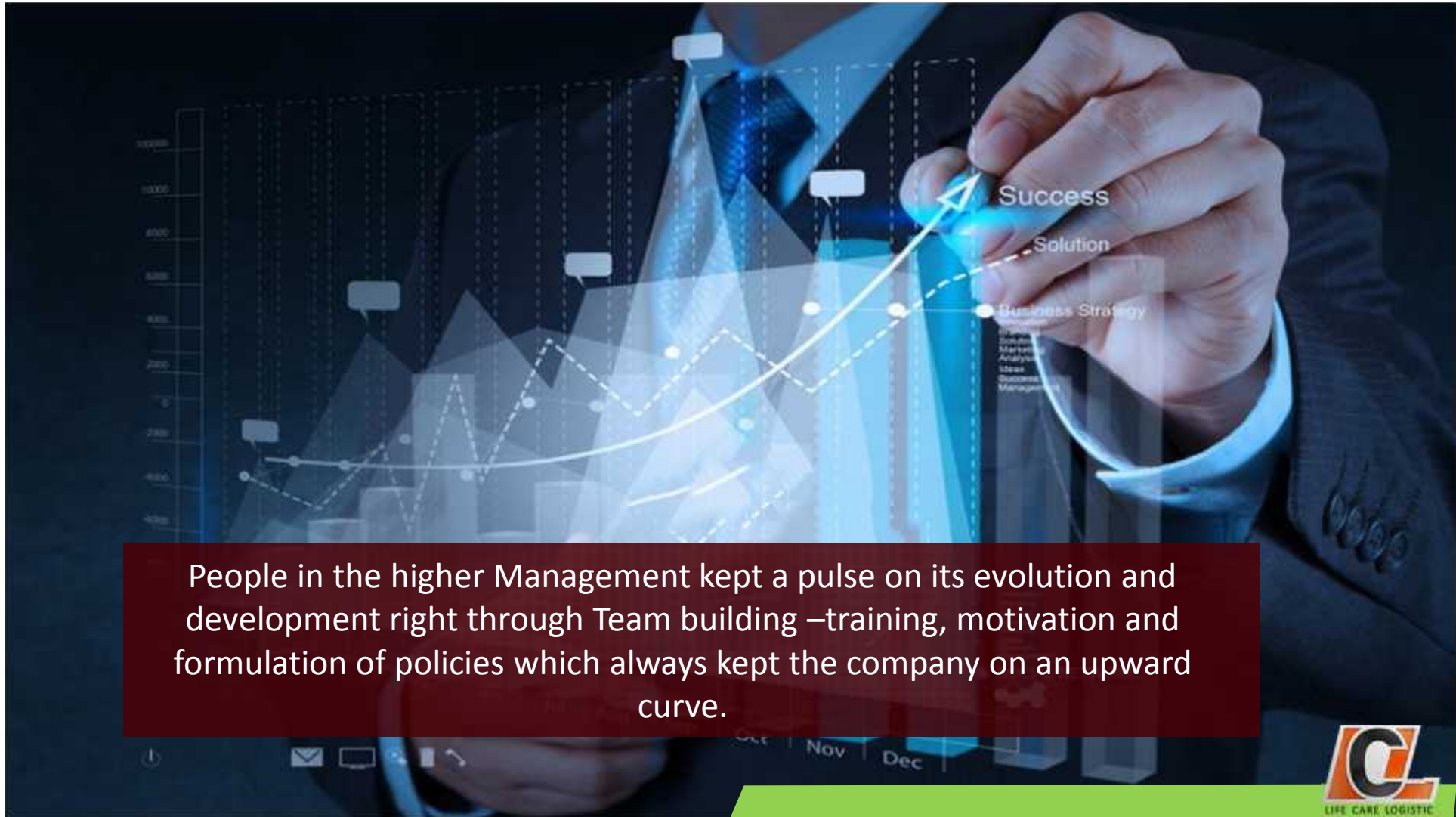
Aligned with the evolving trends in the logistics industry in India,

Life Care Logistic Pvt. Ltd.,

An ISO 9001:2015 certified company
came into existence in **2002**

and thereafter has set standards as a service-providing company helping customers with **lesser logistics-costs** and fulfilling service





People in the higher Management kept a pulse on its evolution and development right through Team building –training, motivation and formulation of policies which always kept the company on an upward curve.

TODAY,
LIFECARE LOGISTIC PVT. LTD.
excels in a huge range of offerings through
logistical solutions :-

INFRASTRUCTURAL
SOLUTIONS



WAREHOUSE
MANAGEMENT



TRANSPORT
MANAGEMENT





VISION

To become the leading Logistics Service Provider in India, by providing the time bound quality services through deep understanding of our customer's needs and following to company's SOP that shall ensure most preferred supplier status.



MISSION

To develop a superior understanding with our customers take care of their needs. To encourage teamwork in order to get the most effective integration of ideas & efforts of our people, to encourage individual motivation, personal initiative & willingness to counter hardships, to maximize the development of individuals through proper training to recognize vital performance as a key to continuing employment.

LOGISTICS SERVICES

WITH THE HEAD OFFICE IN INDORE

and an enormous chain of local branches, across **9 states** in India, carrying out different business-operations, we are empowered with every ability and facility to execute our services.





Small bundles of commodities to Full
Truck Load-shipments and various other
dependable and demand-specific
mechanisms to transport goods; we
define logistics-management in the true
sense





Our Transport Management,

powered by deep logistical strength on a fleet of multi-utility

- ❑ GPS-empowered vehicles,
 - ❑ Surface Transportation,
 - ❑ Combination of transport-mediums,
 - ❑ Goods-safety and Time-bound delivery,
- are tailored to suit different clients' specific needs.





Supremely efficient
ERP-based software
hosted on secure cloud and an exclusive
Consignment Tracking System enrich our
logistics services, making them more and more
information-based, updated and client-
oriented.





EFFICIENT WAREHOUSING



Warehousing works as an integral ingredient in the end-to-end logistics-value-chain and our Logistics Management Solutions provide you with reliable warehousing-services based on superior facilities & technology. We always have set benchmarks in the warehousing-arena by practicing GWP , HSE norms & WMS.



LIFE CARE LOGISTIC



Shared warehouses, dedicated warehousing solutions, value-added services like Kitting , Repacking , Co -Packaging or the subsequent delivery to dealers and distributors. We have our own in-house **RF-capable WMS-software** to enhance our accuracy and productivity of warehouse operations in a seamless manner.



A Total warehousing

SPACE OF 2 MILLION SQ. FT.

across different locations , accurate space-wise assortment of varied goods, proper arrangements of storing and stacking, high rise racking equipped with MHE , cool & cold room facility and a client-specific resource-distribution ensuring their swift dispatch in line with a duly maintained inventory form the base of our warehousing-management.



Life Care Logistic Pvt Ltd



Under **NDC / RDC**, we provide services to transport goods from Mother Warehouses to other warehouses spread at different locations in India.





—
We practice 5S-approach
in its real meaning having
our
warehousing operations
flawless, organized and
efficient.
—

Labour Standards



Statutory Compliances



Business Ethics



LIFE CARE LOGISTIC



Safety Measures



Health





LCLPL has an environment policy in its mechanism dedicated to striving towards a better environment for today and tomorrow. Regular training for HSE, quality and environment is ingrained in our routine schedule.





We possess an overbearing and striking list of 27 clients along with 64 account-locations representing different sectors, like Asian Paints India Ltd., Anchor Electricals Pvt. Ltd., Britannia Industries Ltd., Becton & Dickinson (I) Ltd. , Colgate-Palmolive India Ltd., Daikin India Ltd., Eli Lilly & Company (India) Ltd., Eveready Industries (I) Ltd., Exide Industries Ltd., Goodyear India Limited, Johnson & Johnson India Pvt. Ltd. (Pharma & Consumer), Jyothi Laboratories Ltd., Kirloskar Brothers Ltd., LG Electronics India Pvt. Ltd., Marico Ltd, Mitsubishi India Ltd., Modi Naturals Ltd., Nokia India Ltd., Nourishco Beverages, Panasonic India Pvt. Ltd., PepsiCo India Holdings Pvt. Ltd., Plugra Pumps, Shell India Market Pvt Ltd., Tropicana, Usha International Ltd., Wrigley India Ltd.



QUALITATIVE SERVICES,

Measures of the WH-quality-management are meticulously in place at LCLPL to meet various contractual, statutory and regulatory requirements across different stages of warehousing-management with the applicable external requisites. An effective internal audit is a regular part of our curriculum.



OUR TEAM

Our teams across locations, as a large repository of collective acumen from Warehousing and logistics, toil day-in and day-out with an unflinching commitment to produce a huge and assorted body of work daily.

In hiring process we understand the importance of having extremely passionate, intelligent, determined & Ethical people who can collaborate with the company SOP and work accolades have been an integral part of Company's culture.



Prestigious Quality Award



Winner of Ramkrishna Bajaj National Quality Award 2012

**Received from
Justice C.S.Dharmadhikari (Mumbai HC)
Mr. Neeraj Bajaj &
Mr. Niranjan Hiranandani**



We have won various awards from our principal companies for best performance

- ❑ Pinnacle awards from P&G 2001 to 2005
- ❑ Highest Index Increase in ACV Distribution from P&G 2003. Highest ACV, RPS & OHD in West India from P&G 2007.
- ❑ Highest Distribution in West India from P&G 2007.
- ❑ Excellence Award for Best Regional CFA (west) from Good Year Ltd. 2009 & 2010.
- ❑ Platinum Depot from Marico 2008, 2009, 2010, 2013, 2015.
- ❑ Diamond Depot from Marico 2011, 2012, 2014.
- ❑ Best Depot in West from Shell India Markets Pvt. Ltd. 2011, 2016.
- ❑ Best Performance Winner Award from Asian Paints Ltd. "Samanvay" 2012-2013-2014-2015-2016.
- ❑ 3rd position in All India Ranking for Warehouse Operations from Panasonic India Pvt Ltd 2015-2016.
- ❑ Qualified - Labour Standard Audit (Sedex) for Colgate India Ltd. 2016.
- ❑ Qualified - Quality Audit from Colgate India Ltd. 2016.



THE WAY FORWARD

We already enjoy a robust presence in 9 states across India and that gives us confidence to expand ourselves. Recently we have acquired 8 Lakhs Sq. ft. of land in Indore, 3 Lakh Sq. ft. in Pune and 1 Lakh Sq. ft. in Goa at prime locations.



Gallery



Gallery





Thank You



LIFE CARE LOGISTIC